

Northwest
Micro Mineral
Study Group



MICRO PROBE

SPRING, 1987

VOLUME VI Number 4

SPRING MEETING

2 (and 3) May, 1987

"The Heilmans", Raymond, Washington
10 am until late evening

PROGRAM:

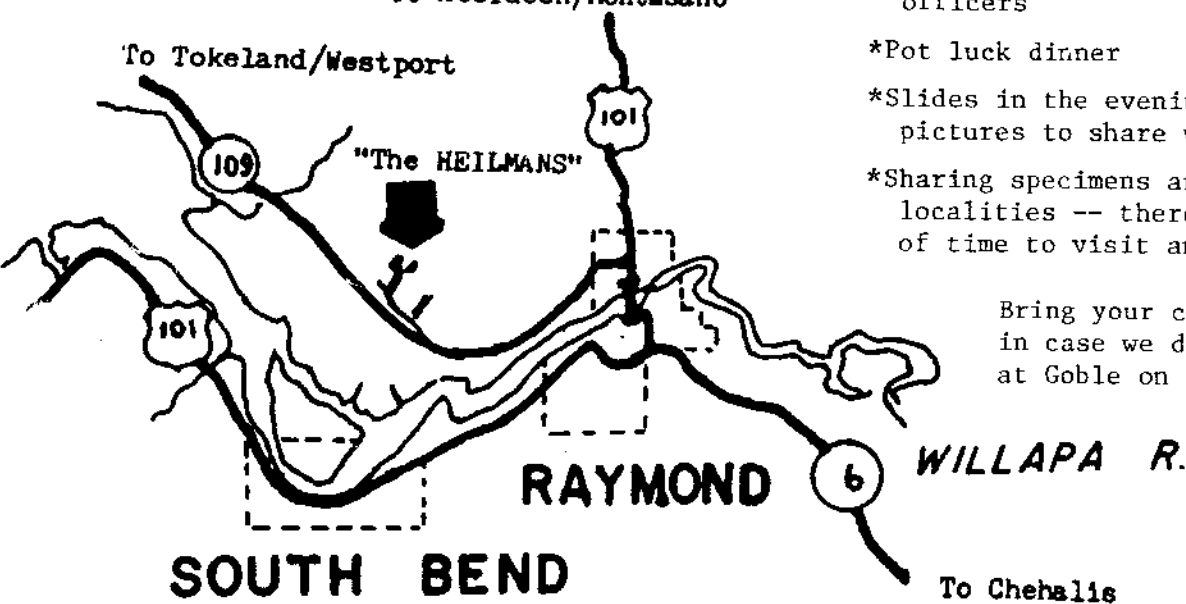
- *Update on the three potential new minerals for the Northwest
- *Discussion of the material currently being collected at Goble, Oregon
- *Planning for our Memorial Day trip to collect at the new Ritter quarry (See other side for more information)
- *Business meeting and election of officers
- *Pot luck dinner
- *Slides in the evening -- bring some pictures to share with the group
- *Sharing specimens and collecting localities -- there's always lots of time to visit and exchange info.

Bring your collecting tools in case we decide to collect at Goble on Sunday.

To reach the HEILMANS (former Bayles Army Post), turn west off highway US 101 at the north end of the bridge in Raymond, Washington. Follow highway toward Tokeland/Westport about 2 miles. A side road angles off to the right. Follow this road until you see the buildings on your right (just before you come to a hill). Turn into the driveway
Phone 942-5231

To Aberdeen/Montasano

To Tokeland/Westport



SOUTH BEND

RAYMOND

WILLAPA R.

To Chehalis

SPRING FIELD TRIP

May 23, 24, 25, 1987

The Place: The new quarry on the road to Ritter Hot Springs
Approximately 4 miles west of the turnoff from US 395.
The quarry is on the north side of the road just east of the
old quarry. It is currently being used for road gravel and
may have a large pile in front of it.

Time: We will plan to collect at the quarry all day Saturday, May 23
Plan to join the group that day. Trips to other nearby areas
(3 mile school, Monument, etc.) will be planned that day for
Sunday and Monday.

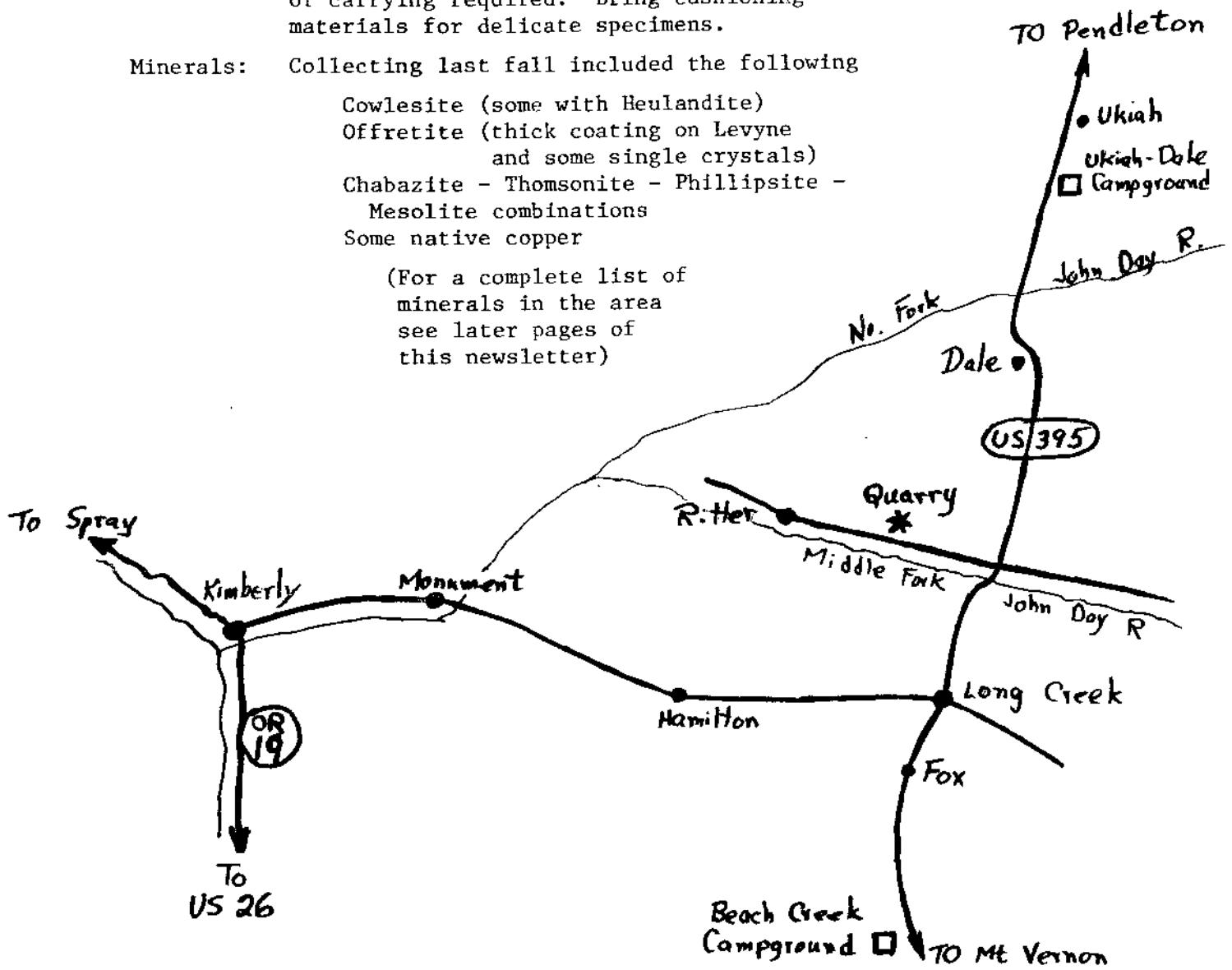
Facilities: Campground with hookups, flush toilets, etc. at Ukiah-Dale
(about 20 miles north on US 395).
Campground at Beach Creek -- primitive, Forest Service
(about 25 miles south on US 395).
Restaurant, Service Station, etc. at Long Creek
(about 10 miles south on US 395).

Equipment. Heavy rock-breaking tools.
The quarry is easily accessible without a lot
of carrying required. Bring cushioning
materials for delicate specimens.

Minerals: Collecting last fall included the following

- Cowlesite (some with Heulandite)
- Offretite (thick coating on Levyne
and some single crystals)
- Chabazite - Thomsonite - Phillipsite -
Mesolite combinations
- Some native copper

(For a complete list of
minerals in the area
see later pages of
this newsletter)



ZEOLITE SPECIES (1987)

ZEOLITE RESEARCH & EXPLORATION
 RUDY W. TSCHERNICH
 526 AVE. A, #A
 SNOHOMISH, WASHINGTON 98290

AMICITE
 ANALCIME
 BARRERITE
 BREWSTERITE
 CHABAZITE
 CLINOPTILOLITE = Si-rich HEULANDITE
 COWLESITE
 DACHIARDITE
 EDINGTONITE
 EPISTILBITE
 ERIONITE
 FAUJASITE
 FERRIERITE
 BARRONITE
 BISMONDINE
 GMELINITE
 GOBBINSITE
 GONNARDITE
 GOOSECREEKITE
 HARMOTOME
 HERSCHELITE = Na-rich CHABAZITE
 HEULANDITE
 HSIANGHUALITE
 LAUMONTITE
 LEVYNE
 MAZZITE
 MERLINOITE
 MESOLITE
 MORDENITE
 NATROLITE
 OFFRETITE
 PARANATROLITE = disordered NATROLITE
 PARTHEITE
 PAULINGITE
 PERLIALITE
 PHILLIPSITE
 ROGGIANITE
 SCOLECITE
 STELLERITE
 STILBITE
 SVETLOZARITE = disordered DACHIARDITE
 TETRANATROLITE = disordered NATROLITE
 THOMSONITE
 VISEITE
 WAIRAKITE
 WELLSITE = Ba-bearing PHILLIPSITE
 WILLENDERSONITE = K-rich CHABAZITE
 YUGAWARALITE

All of the zeolite species in the left hand column are fully excepted species by IMA although considerable evidence indicates several of these species SHOULD become varieties of species on the right. Until some of these species are officially discredited they are still official mineral species. The tendency in IMA is to retain species because of the reputation of mineralogists describing a discredited species is involved, extent of published information using the old name, and like most governing groups, indecision, and lack of action. Some of these variations may be with us forever.

PHOTO CREDITS

25. Offretite New Ritter Quarry, Grant Co., Oregon
x 15

A single, needle-like crystal and a very thick, fibrous coating on hexagonal Levyne blades, mounted on a gray-white smectite. Specimen collected 9/86.

26. Unknown #2 Goble, Columbia Co., Oregon
x 18

A cluster of water-clear bipyramids in a tiny cavity lined with black smectite. This form is found in the unaltered basalt near the center of boulders. Specimen collected 2/87.

27. Unknown #2 Goble, Columbia Co., Oregon
X 12

A single crystal, clouded on the inside but clear along the outer margin, mounted on a brown-orange smectite. Larger crystals such as this, as well as the altered smectite, are found in the altered margins of the basalt boulders. Specimen collected 2/87.

The name "TSCHERNICHITE" is being proposed for this mineral.

28. Unknown #3 in Unknown #2 Goble, Columbia Co., Oregon
x 10

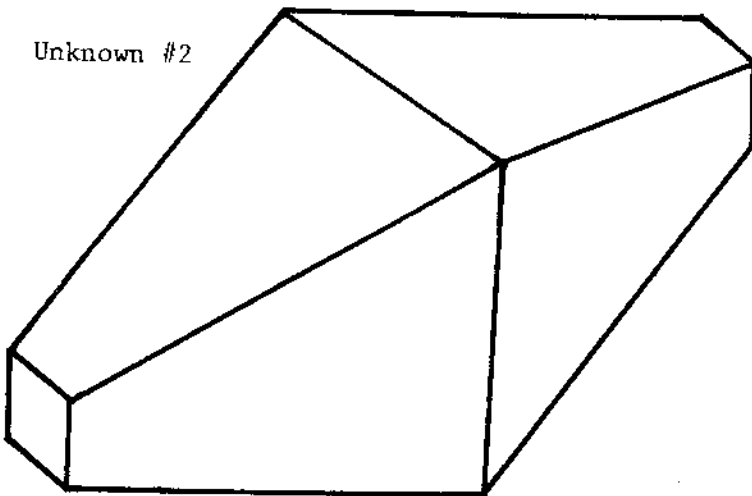
Yes, there appears to be another mineral present along Neer Road. It is usually embedded in fine-grained drusy Tschernichite and is much whiter in appearance, generally because of a white, compact, radial ball beneath. The surface of the ball shows terminations different from the Tschernichite. Specimen collected 3/87. So far quite rare (perhaps one to two dozen specimens known).

29. Unknown #3 and Unknown #2 Goble, Columbia Co., Oregon
x 390

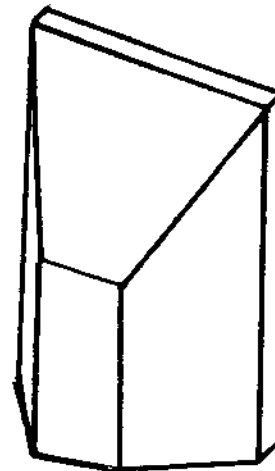
Scanning Electron Micrograph showing the newest mineral on the left against a background of Tschernichite crystals. Specimen collected 2/87. Both minerals seem to be hydrated calcium aluminum silicates (zeolites).

All pictures and specimens courtesy of the editor: Donald G. Howard
356 S. E. 44 th Ave.
Portland, Oregon 97215

Unknown #2



Unknown #3



SELECTED ZEOLITE LOCATIONS IN THE PACIFIC NORTHWEST

by
 Rudy W. Tschernich
 526 Ave. A #A
 Snohomish, Washington 98290
 206-568-2857 or 568-5369

January 29, 1987

C⁺ = Common at that location
 S = Scarce at that location
 VS = Very scarce at that location
 Clay = clay/chlorite mineral undifferentiated

Locations are arranged from north to south along the coast, inland, and eastern areas. Information about additional locations and species would be appreciated.

WASHINGTON COAST ZEOLITE LOCATIONSMATTS MATTS BAY QUARRY, PORT LUDLOW, WASHINGTON

LAUMONTITE (C) NATROLITE (S) CHALCOPYRITE (VS) PYRITE (VS)
 CALCITE (C) ANALCIME (S) COPPER (VS) CHALCOCITE (VS)
 THOMSONITE (S) STILBITE (S)

Chalcocite twins found with Chalcopyrite overgrowth.

STATUS: Difficult to get permission; productive with work.

SOUTH POINT QUARRY, HOODS CANAL BRIDGE, JEFFERSON CO., WASHINGTON

QUARTZ (C) CALCITE (C) CLAY (C) MORDENITE (S)

STATUS: Abandoned quarry; specimens can still be found.

RT 104 ROADCUT, HOODS CANAL BRIDGE, JEFFERSON CO., WASHINGTON

MESOLITE (C) ANALCIME (C) LAUMONTITE (C) CALCITE (C)
 NATROLITE (C) STILBITE (S)

Mesolite needles with Natrolite on the tips.

STATUS: Exhausted after completion of road work.

QUILCENE, JEFFERSON CO., WASHINGTON

STILBITE (C) CALCITE (C) LAUMONTITE (S) QUARTZ (S)

STATUS: Abandoned quarry south of town; some specimens present

PIONEER QUARRY, BREMERTON, KITSAP CO., WASHINGTON

ANALCIME (C) CHABAZITE (C) LAUMONTITE (C) SCOLECITE (S)
 STILBITE (C) APOPHYLLITE (C) CALCITE (C)

STATUS: Permission must be obtained; specimens are sporadic.

LAKE CUSHMAN, MASON CO., WASHINGTON

PREHNITE (S) ANALCIME (S) QUARTZ (S) FELDSPAR (S)

STATUS: UNKNOWN; amygdules in basalt along north shore of lake.

ICE BAR RIDGE, MASON CO., WASHINGTON

ANALCIME (C) STILBITE (C) SCOLECITE (C) HEULANDITE (C)

STATUS: UNKNOWN; found in pillow basalt south of ridge.

MOUNT-LINCOLN, MASON CO., WASHINGTON

LAUMONTITE (S) CALCITE (S)

STATUS: UNKNOWN; occurs in pillow basalt.

ROBERTSON QUARRY, SHELTON, MASON CO., WASHINGTON

ANALCIME (C) NATROLITE (C) CHLORITE (C) PYRITE (S)
CALCITE (C)

STATUS: Active quarry, good collecting.

ROCK CANDY MOUNTAIN, THURSTON CO., WASHINGTON

CHABAZITE (C) MORDENITE (C) CLAY (C) CALCITE (C)
STILBITE (C) LEVYNE (C) OFFRETITE-ERIONITE (S)

Offertite-erionite intergrowth is present as an overgrowth on levyne.

STATUS: Open to collecting; productive with work.

KENNEDY CREEK, SHELTON, THURSTON CO., WASHINGTON

CHABAZITE (C) MESOLITE (C) ANALCIME (C) THOMSONITE (S)
APOPHYLLITE (C) CALCITE (C)

STATUS: Open to collecting along logging road; specimens can be found.

CAPITOL PEAK, THURSTON CO., WASHINGTON

GARRONITE (C) COWLESITE (S) COWLESITE

STATUS: Collecting along logging road; specimens can be found.

VALE, THURSTON/LEWIS CO., WASHINGTON

EPISTILBITE (S)

STATUS: crystals in weathered basalt; some specimens can be found

DAKVILLE, GRAYS HARBOR CO., WASHINGTON

ANALCIME (C) CALCITE (C) MESOLITE (C)

STATUS: UNKNOWN; quarry along HWY 9 NW of town.

LINCOLN CREEK, DOTY, LEWIS CO., WASHINGTON

NATROLITE (C) ANALCIME (C) CHABAZITE (C) LAUMONTITE (C)
CALCITE (C) CLAY (C)

STATUS: Abundant in old quarry used for logging roads.

PE ELL, LEWIS CO., WASHINGTON

NATROLITE (C) CLAY (C) PYRITE (S) CHABAZITE (S)
ANALCIME (C) CALCITE (C)

STATUS: Open to collecting; specimens present with hard work.

MOUNT SOLO, LONGVIEW, WASHINGTON

NATROLITE (C) CHABAZITE (C) CLAY (C) STILBITE (VS)
THOMSONITE (C) CALCITE (C) GMEINITE (S) PYRITE (S)
ANALCIME (C)

STATUS: Open to collecting; productive when in operation.

ALTOONA, WAHKIAKUM CO., WASHINGTON

FERRIERITE (C) SIDERITE (C) MORDENITE (C) PYRITE (S)
CHALCEDONY (C) CLAY (C) DACHIARDITE (S) APATITE (VS)
CALCITE (C) CLINOPTILOLITE (C)

STATUS: Open to collecting along dike; productive with hard work.

VESPER PEAK, SNOHOMISH CO., WASHINGTON

GROSSULARITE (C) QUARTZ (C) AUBITE (C) LAUMONTITE (S)
PRENITE (C) DIOPSIDE (C) SCAPOLITE (S)

STATUS: Open to collectors on mining claim; collecting productive.

CHERRY CREEK, DUVALL, WASHINGTON

STILBITE (C) MORDENITE (C) CHALCEDONY (C) COPPER-STAIN (S)
HEULANDITE (C)

STATUS: Some specimens are still found.

RAGING RIVER QUARRY, PRESTON, KING CO., WASHINGTON

STILBITE (C) HEULANDITE (C) LAUMONTITE (C) CALCITE (C)
MORDENITE (C)

STATUS: Permission must be obtained; collecting is sporadic.

SQUAK MOUNTAIN, KING CO., WASHINGTON

LAUMONTITE (S) CALCITE (S)

STATUS: UNKNOWN; occurs in andesite.

CRATER LAKE, NORTH BEND, KING CO., WASHINGTON

CHABAZITE (S) QUARTZ (S) ADULARIA (S)

STATUS: UNKNOWN; lining fractures in metavolcanic rock.

LENNOX CREEK, NORTH BEND, KING CO., WASHINGTON

STILBITE (S) NATROLITE? (S) QUARTZ (S)

STATUS: depleted; in one microlitic cavity.

RENTON, KING CO., WASHINGTON

CLINOPTILOLITE (C)

STATUS: UNKNOWN; sedimentary zeolites in Oligocene sediments.

WHITE RIVER, ENUMCLAW, KING CO., WASHINGTON

CHABAZITE (S) QUARTZ (S) CALCITE (S) LAUMONTITE (S)

STATUS: UNKNOWN; in altered basalt along logging road.

MUD MOUNTAIN DAM QUARRY, ENUMCLAW, KING CO., WASHINGTON

CHABAZITE (S) STILBITE (S) CALCITE (S)

STATUS: UNKNOWN; reported in vugs up to 6" in diameter.

MOUNT ROOSEVELT, SNOQUALMIE PASS, KING CO., WASHINGTON

LAUMONTITE (C) STILBITE (S) EPIDOTE (S) QUARTZ (S)
MAGNETITE (S) NATROLITE (S) TOURMALINE (S)

STATUS: UNKNOWN; occurs in joint openings.

BACKBONE RIDGE, MOUNT RAINIER NATIONAL PARK, PIERCE CO., WASHINGTON

CHABAZITE (C) STILBITE (C)

STATUS: UNKNOWN; common as joint fillings in andesite.

MOUNT RAINIER NATIONAL PARK, PIERCE CO., WASHINGTON

WAIRAKITE (S)

STATUS: UNKNOWN; in cavity fillings of Keachelus formation.

RAINIER, THURSTON CO., WASHINGTON

LAUMONTITE (C)

STATUS: UNKNOWN

SKOOKUMCHUCK DAM, TENINO, THURSTON CO., WASHINGTON

MESOLITE (C) QUARTZ (C) APOPHYLLITE (S) ANALCIME (S)
STILBITE (C) CALCITE (C) THOMSONITE (S) LAUMONTITE (S)
HEULANDITE (C) CLAY (C) CHABAZITE (S) OKENITE (VS)
MORDENITE (C)

STATUS: Closed to collecting after completion of the dam.

MOSSYROCK DAM, LEWIS CO., WASHINGTON

STILBITE (C) CHABAZITE (C) HEULANDITE (C) MESOLITE (S)
QUARTZ (C) CALCITE (C) CLAY (C) LAUMONTITE (S)
MORDENITE (C) LEVYNE (VS)

STATUS: Closed to collecting after completion of the dam.

KOSMOS LOGGING ROAD, RANDEL, LEWIS CO., WASHINGTON

EPISTILBITE (C) CALCITE (C) LAUMONTITE (S) SCOLECITE (S)
STILBITE (C) QUARTZ (C) CHABAZITE (S)
HEULANDITE (C) MORDENITE (C)

STATUS: Open to collecting along logging road; productive with work.

CANYON CREEK, TUM TUM MOUNTAIN, COWLITZ CO., WASHINGTON

LAUMONTITE (C)

STATUS: collecting in roadcuts; some specimens can be found.

TOUTLE RIVER, COWLITZ CO., WASHINGTON

STILBITE (C) MORDENITE (C) SCOLECITE (C) QUARTZ (C)
HEULANDITE (C)

STATUS: Open to collecting along road; productive with work.

SIGNAL PEAK, SILVER LAKE, COWLITZ CO., WASHINGTON

SCOLECITE (S) MESOLITE (S)
Mesolite is found on a scolecite base.

STATUS: UNKNOWN

ELK MOUNTAIN (ROAD 1440), COWLITZ CO., WASHINGTON

SCOLECITE (C) CALCITE (C) LEVYNE (C) OFFRETITE (VS)
MESOLITE (C) APOPHYLLITE (C) STILBITE (C) GYROLITE (VS)
LAUMONTITE (C) QUARTZ (S)

STATUS: Open to collecting along logging road; productive with work.

KALAMA I-5 ROAD CUT, KALAMA, COWLITZ CO., WASHINGTON

MESOLITE (C) MORDENITE (C) ANALCIME (C) CELADONITE (S)
CHABAZITE (C) HEULANDITE (C) QUARTZ (C) EPISTILBITE (VS)
STILBITE (C) CALCITE (C) ARAGONITE (S) PHILLIPSITE (VS)
THOMSONITE (C) LAUMONTITE (C)

STATUS: Closed to collecting after completion of road.

WOODLAND, LEWIS CO., WASHINGTON

STILBITE (C) CALCITE (C) MESOLITE? (C)

STATUS: UNKNOWN

LEWIS RIVER / POISON CREEK, SKAMANIA CO., WASHINGTON

STILBITE (C) HEULANDITE (C) MORDENITE (C) QUARTZ (C)

STATUS: Open to collecting in road cut; productive with work.

LEWIS RIVER / QUARTZ CREEK, SKAMANIA CO., WASHINGTON

HEULANDITE (C) CALCITE (C) DATOLITE (S) EPISTILBITE (VS)
STILBITE (C) PYRITE (S) FLUORITE (VS)

STATUS: Open to collecting in road cut; productive with work.

YACOLT, CLARK CO., WASHINGTON

HEULANDITE (C) COWLESITE (S) THOMSONITE (S) LAUMONTITE (S)
CALCITE (C) CHABAZITE (S) EPISTILBITE (S) LEVYNE (S)
CLAY (C) STILBITE (S) PHILLIPSITE (S) MESOLITE (S)
CHALCEDONY (S)

STATUS: UNKNOWN; collecting in road cut; area depleted.

LACKAMAS LAKE, CLARK CO., WASHINGTON

NATROLITE (S) CHABAZITE (S) STILBITE (S) CALCITE (S)

STATUS: UNKNOWN; collect in road cuts north of lake.

LIVINGSTON QUARRY, ORCHARDS, CLARK CO., WASHINGTON

STILBITE (C) OPAL (C) LAUMONTITE (C) SCOLECITE (S)
HEULANDITE (C) CALCITE (C)

STATUS: Difficult to get permission; collecting sporadic.

PARADISE RIDGE, STEVENSON, SKAMANIA CO., WASHINGTON

LAUMONTITE (S)

STATUS: UNKNOWN; druses lining fractures in altered basalt.

BUNKER HILL, STEVENSON, SKAMANIA CO., WASHINGTON

STILBITE (S)

STATUS: UNKNOWN; occurs in vesicles next to diabase intrusion.

BEAR CREEK, STEVENSON, SKAMANIA CO., WASHINGTON

STILBITE (S) MORDENITE (S) SCOLECITE (S)

STATUS: UNKNOWN; occurs in basalt amygdules.

ROCK CREEK, STEVENSON, SKAMANIA CO., WASHINGTON

MORDENITE (C) CHALCEDONY (C) STILBITE (S) ANALCIME (VS)
HEULANDITE (C) CLAY (C) CALCITE (S)

STATUS: Open to collecting in road cut; productive with work.

EASTERN WASHINGTON ZEOLITE LOCATIONS:

BOUNDARY MOUNTAIN, PEND OREILLE CO., WASHINGTON

THOMSONITE (S)

STATUS: UNKNOWN; occurs in lamprophyre dikes.

CHOPAKA MOUNTAIN, NIGHTHAWK AREA, OKANOGAN CO., WASHINGTON

SCOLECITE (S) EPIDOTE (S)

STATUS: UNKNOWN; occurs in veins cutting amphibolite country rock.

PHALEN LAKE, STEVENS CO., WASHINGTON

ANALCIME (C)

STATUS: UNKNOWN; in Phalen Lake volcanics.

MIDNITE URANIUM MINE, WELLPINIT, STEVENS CO., WASHINGTON

AUTUNITE (C) CLAY (C) PYROLUSITE (C) STILBITE (VS)

STATUS: Permission must be obtained; specimens difficult to find.

WELLPINIT, STEVENS CO., WASHINGTON

CHABAZITE (S) STILBITE (S) HEULANDITE (S) MORDENITE? (S)

STATUS: vugs in andesite along road cuts west of town.

CAMAS LAND, BLEWETT, CHELAN CO., WASHINGTON

STILBITE (S)

STATUS: UNKNOWN; occurs in pockets of a chill zone of a diabase sill.

NUMBER 2 CANYON, WENATCHEE, CHELAN CO., WASHINGTON

PHILLIPSITE (S)

STATUS: UNKNOWN; occurs in andesite.

FAIRVIEW CANYON, WENATCHEE, DOUGLAS CO., WASHINGTON

STILBITE (S)

STATUS: UNKNOWN; amygdules up to 6" diameter are reported.

ROCK ISLAND DAM, ROCK ISLAND, DOUGLAS CO, WASHINGTON

PHILLIPSITE (C) ERIONITE (C) CALCITE (C) PAULINGITE (S)
CLAY (C) OFFRETITE (S) PYRITE (S) CHABAZITE (VS)
CLINOPTILOLITE (C)

STATUS: Open to collecting on dike in front of dam; very productive.

FIRST CREEK, KITTITAS CO., WASHINGTON

CHALCEDONY (C) EPISTILBITE (S) LAUMONTITE (S) STILBITE (S)

STATUS: Open to collecting on hills along creek; specimens scarce.

OREGON COAST ZEOLITE LOCATIONS

YOUNGS RIVER, ASTORIA, CLATSOP CO., OREGON

QUARTZ (C) MESOLITE (S) CALCITE (S) PYRRHOITE (S)

STATUS: Collecting in logging road cut; some material can be found.

NESTUCCA RIVER, TILLAMOOK CO., OREGON

NATROLITE (C) APOPHYLLITE (C)

STATUS: UNKNOWN

CAPE LOOKOUT QUARRY, TILLAMOOK CO., OREGON

ERIONITE (C) MORDENITE (C) CHALCEDONY (C) PHILLIPSITE (S)
DACHIARDITE (C) CALCITE (C) CLAY (C) PYRITE (S)
CLINOPTILOLITE (C)

STATUS: Open to collecting in old quarry; specimens excellent.

CASCADE HEAD, TILLAMOOK CO., OREGON

GMELINITE (VS)

STATUS: UNKNOWN

YAQUINA HEAD QUARRY, AGATE BEACH, LINCOLN CO., OREGON

ERIONITE (C) PHILLIPSITE (C) CLAY (C) BARITE (VS)
PYRITE (C) CALCITE (C) CHABAZITE (C) DACHIARDITE (VS)
MORDENITE (C) CLINOPTILOLITE (C)

STATUS: Permission should be obtained; specimens excellent.

ECKMAN QUARRY, WALDPORT, LINCOLN CO., OREGON

NATROLITE (C) ANALCIME (C) CALCITE (C)

STATUS: Permission must be obtained; sporadic collecting.

STRAWBERRY HILL, LANE CO., OREGON

NATROLITE (C) ANALCIME (C)

STATUS: Collecting on beach, basalt washed in from rock under water.

WESTERN OREGON ZEOLITE LOCATIONS:

GOBLE, COLUMBIA CO., OREGON

MESOLITE (C) HEULANDITE (C) PYROLUSITE (S) CLAY (C)
THOMSONITE (C) CALCITE (C) PHILLIPSITE (S) CAVANSITE (VS)
STILBITE (C) APOPHYLLITE (C) CHALCEDONY (S) LEVYNE (S)
CHABAZITE (C) ANALCIME (S) CELADONITE (S) BARRONITE (S)
MORDENITE (S) COWLESITE (S) OKENITE (S) COPPER (VS)
NEW ZEOLITE (S) OFFRETITE-ERIONITE (VS) OPAL (C)

Offretite-erionite intergrowth found only on some levyne.

STATUS: Open to collecting along road; productive with alot of work.

SOUTH GOBLE, COLUMBIA CO., OREGON

MORDENITE (C) STILBITE (C) CHABAZITE (C) CALCITE (S)

STATUS: Location depleted.

RAINIER, COLUMBIA CO., OREGON

CALCITE (C) PYRITE (C) STILBITE (C) CHABAZITE (C)

STATUS: Permission to quarry difficult; material present at times.

HOOD RIVER, HOOD RIVER CO., OREGON

CLINOPTILOLITE (C)

STATUS: Collecting in road cuts west of town; collecting good.

MILWAUKIE, CLACKAMAS CO., OREGON

STILBITE (C) CALCITE (C) ERIONITE (VS) HEULANDITE (VS)
Fe-BAPONITE (C) CHABAZITE (C) LEVYNE (VS) OFFRETITE (VS)
Complex intergrowths of offretite-erionite with levyne.

STATUS: Site still open to collecting, specimens available with work.

ELK ISLAND, MILWAUKIE, CLACKAMAS CO., OREGON

CHABAZITE (C) CLAY (C) ANALCIME (C) LEVYNE (S)
STILBITE (C) OFFRETITE-ERIONITE (C)

STATUS: Open to collecting when water is low; specimens can be found.

NEW ERA, CLACKAMAS CO., OREGON

STILBITE (C) CALCITE (C) CHABAZITE (S) MESOLITE (VS)
NATROLITE (C) LAUMONTITE (C) THOMSONITE (S) SCOLECITE (VS)

Zoned needles scolecite at base, mesolite middle, natrolite tips.

STATUS: Open to collecting; specimens present with work.

CLACKAMAS RIVER, ESTACADA, CLACKAMAS CO., OREGON

SIDERITE (C) PYRITE (C) WELLSITE (S) OFFRETITE (VS)
SELENITE (C) ARAGONITE (S) LEVYNE (VS) BARITE (VS)
CLINDPTILOLITE (C) EPISTILBITE (VS)

STATUS: Many locations in cliffs & dikes along river; good collecting.

OAK GROVE FORK OF CLACKAMAS RIVER, CLACKAMAS CO., OREGON

GISMONDINE (C) CHABAZITE (C) THOMSONITE (S) PYRITE (S)
CALCITE (C) LEVYNE (S) CLAY (C) ERIONITE ? (S)

STATUS: Specimens along road and over the bank; good collecting.

RICKREALL CREEK QUARRY, DALLAS, POLK CO., OREGON

APOPHYLLITE (C) STILBITE (C) QUARTZ (C) PYRITE (S)
MORDENITE (C) CALCITE (C) CLAY (C) MAGNETITE (VS)
HEULANDITE (C)

STATUS: Open to collecting; very good when quarry is active.

MILL CREEK QUARRY, MILL CREEK, BUELL, POLK CO., OREGON

STILBITE (C) QUARTZ (C) SMECTITE (C) APOPHYLLITE (VS)
CALCITE (C)

STATUS: Abandoned quarry; collecting is excellent.

COFFIN BUTTE, CAMP ADAIR, BENTON CO., OREGON

ANALCIME (C) NATROLITE (C)

STATUS: UNKNOWN

LAMBERT QUARRY, KINGS VALLEY, BENTON CO., OREGON

APOPHYLLITE (C) CHABAZITE (C) STILBITE (C) ANALCIME (S)
NATROLITE (C) CALCITE (C) HEULANDITE (S)

STATUS: Inactive quarry; not productive now.

NORTH-QUARRY, WREN, BENTON CO., OREGON

STILBITE (C) CHABAZITE (C) CLAY (C) ANALCIME (S)
APOPHYLLITE (C) LAUMONTITE (C) CALCITE (C) PYRITE (S)

STATUS: Collecting good when quarry is active.

SOUTH QUARRY, WREN, BENTON CO., OREGON

NATROLITE (C) LAUMONTITE (C) CLAY (C) ANALCIME (S)
MESOLITE (C) CALCITE (C)

Zoned needles, primarily natrolite with various amounts of mesolite.

STATUS: Permission must be obtained; specimens excellent.

COX BUTTE, JUNCTION CITY, LANE CO., OREGON

DATOLITE (C) MORDENITE (C) STILBITE (S) CHABAZITE (VS)
CALCITE (C) QUARTZ (S) CLAY (S)

STATUS: Old quarry open to collecting; good specimens still present.

QUARTZVILLE, LINN CO., OREGON

MESOLITE (C) PHILLIPSITE (C)

STATUS: UNKNOWN

GREEN PETER DAM, FOSTER, LINN CO., OREGON

HEULANDITE (C) LEVYNE (C) SCOLECITE (S) GYROLITE (S)
STILBITE (C) APOPHYLLITE (S) THOMSONITE (S)

STATUS: Open to collecting along road north of dam; specimens present.

CASCADIA, LINN CO., OREGON

HEULANDITE (C) STILBITE (S) LAUMONTITE (C)

STATUS: Abandoned quarry along road; material can be found with work.

CALAPOOYA RIVER, DOLLAR, LINN CO., OREGON

STILBITE (C) HEULANDITE (C) CHABAZITE (S) CALCITE (S)
MORDENITE (C) QUARTZ (C) MESOLITE (S)

STATUS: Collecting when logging roads are open; sporadic occurrences.

SHOTGUN CREEK, LINN & LANE CO., OREGON

MESOLITE (C) HEULANDITE (C) THOMSONITE (S) CHABAZITE (S)
APOPHYLLITE (C)

STATUS: Old logging road open to collecting; specimens present.

BUCK MOUNTAIN, north of SPRINGFIELD, LANE CO., OREGON

THOMSONITE (C) MESOLITE (C) CALCITE (C) STILBITE (C)
HEULANDITE (C) NONTRONITE (C) CHABAZITE (C) ANALCIME (S)

STATUS: Old quarry, material scarce.

M-120, north of SPRINGFIELD, LANE CO., OREGON

THOMSONITE (C) MESOLITE (C) ANALCIME (C) CHABAZITE (C)
CALCITE (C) NONTRONITE (C) HEULANDITE (S) STILBITE (S)
COPPER (S)

STATUS: Old quarry, material scarce.

COBURG BUTTE, MCKENZIE RIVER, LANE CO., OREGON

ANALCIME (C) NONTRONITE (C) THOMSONITE (C) NATROLITE (S)
CALCITE (C) STILBITE (S) LAUMONTITE (S) PYRITE (S)

STATUS: Old quarry, material scarce.

SPRINGFIELD BUTTE QUARRY, SPRINGFIELD, LANE CO., OREGON

NATROLITE (C) CALCITE (C) COPPER (S) GMELINITE (S)
CHABAZITE (C) HEULANDITE (S) THOMSONITE (S) PHILLIPSITE (S)
PYROLUSITE (C) MORDENITE (S) ANALCIME (S) NONTRONITE (C)

STATUS: Old quarry depleted; new quarry not productive.

MOUNT PISGAH, SPRINGFIELD, LANE CO., OREGON

MESOLITE (C) SCOLECITE (C) STILBITE (C) HEULANDITE (S)
CALCITE (C) CHALCEDONY (S)
Zoned crystals; mesolite with scolecite on the terminations.

STATUS: UNKNOWN

LORANE QUARRY, LORANE, LANE CO., OREGON

STILBITE (C) CHABAZITE (C) LAUMONTITE (S) DATOLITE (S)
PYRITE (S) HEULANDITE (C) CALCITE (S)

STATUS: UNKNOWN

DORENA DAM, COTTAGE GROVE, LANE CO., OREGON

HEULANDITE (C) STILBITE (C) MORDENITE (S) LAUMONTITE (S)

STATUS: Productive only during construction of dam.

MCGOWAN CREEK, LANE CO., OREGON

HEULANDITE (C) CHABAZITE (C) CALCITE (C) ANALCIME (S)
MESOLITE (S) THOMSONITE (S)

STATUS: UNKNOWN

WHIPPLE QUARRY, DRAIN, DOUGLAS CO., OREGON

MESOLITE (C) THOMSONITE (C) ANALCIME (C) PYRITE (S)
LAUMONTITE (C) CALCITE (C) CLAY (S) HEMATITE-STAIN (S)

STATUS: Open to collecting with permission; collecting good when active.

LOST CREEK DAM, DOUGLAS CO., OREGON

STILBITE (C) CHABAZITE (C) HEULANDITE (C) MORDENITE (S)
CALCITE (C)

STATUS: UNKNOWN

DEAD INDIAN ROAD, ASHLAND, JACKSON CO., OREGON

HEULANDITE (C) STILBITE (C)

STATUS: UNKNOWN

CENTRAL OREGON ZEOLITE LOCATIONS:

NORTH FORK OF THE JOHN DAY RIVER, GRANT CO., OREGON

PHILLIPSITE (C) Ca-SILICATE (C) THOMSONITE (C) NATROLITE (C)
CHABAZITE (C) CALCITE (C) LEVYNE (S) COWLESITE (VS)
GYROLITE (C) APOPHYLLITE (C) GMELINITE (VS)
MESOLITE (C) OFFRETITE-ERIDONITE (S)

Mesolite extending from natrolite needles. Offretite-erionite intergrowth on levyne.

STATUS: Open to collecting along road; productive with hard work.

THREE MILE SCHOOL, RITTER, GRANT CO., OREGON

PAULINGITE (C) CHABAZITE (C) STILBITE (VS) HEULANDITE (VS)
SMECTITE (C) PHILLIPSITE (C)

STATUS: Open to collecting along road; excellent collecting.

RITTER HOT SPRINGS, GRANT CO., OREGON

STELLERITE (C) MESOLITE (C) CHABAZITE (C) HEULANDITE (S)
CALCITE (C) NATROLITE (C) THOMSONITE (S) HEMATITE (S)
ANALCIME (C) PYRITE (S) MARCASITE (S) LAUMONTITE (S)
GYROLITE (C)

Mesolite extending from natrolite needles. Pseudomesolite not present.

STATUS: Free to collect at Hot Springs; specimens can be found.

RITTER QUARRIES, MIDDLE FORK OF JOHN DAY RIVER, GRANT CO., OREGON

MESOLITE (C) CALCITE (C) THOMSONITE (S) PYRITE (S)
NATROLITE (C) CHABAZITE (C) LAUMONTITE (S) MARCASITE (S)
ANALCIME (C) GYROLITE (C) LEVYNE (S) COWLESITE (VS)
PHILLIPSITE (C) HEULANDITE (C) APOPHYLLITE (C) TACHARANITE (VS)
STILBITE (C) OFFRETITE-ERIONITE (S)

Mesolite occurs on natrolite needles. Offretite-erionite intergrowth over grows levyne.

STATUS: Abandoned quarries; collecting good with hard work.

INDIAN ROCK LOOKOUT, MIDDLE FORK JOHN DAY RIVER, GRANT CO., OREGON

NATROLITE (C) ANALCIME (C) THOMSONITE (S) PHILLIPSITE (S)

STATUS: hard hike to area, specimens hard to find.

BEECH CREEK QUARRY, MT. VERNON, GRANT CO., OREGON

CHABAZITE (C) ANALCIME (C) ARAGONITE (S) HEULANDITE (VS)
THOMSONITE (C) CALCITE (C) PHILLIPSITE (S) COPPER (VS)
MESOLITE (C) LEVYNE (C) COWLESITE (S) STILBITE (VS)
OFFRETITE-ERIONITE (C)

No mordenite or apophyllite has been found. Offretite-erionite intergrowth overgrows levyne.

STATUS: Abandoned quarry; collecting is still good.

MONUMENT, GRANT CO., OREGON

NATROLITE (C) GYROLITE (C) ANALCIME (C) CHALCEDONY (C)
APOPHYLLITE (C)

STATUS: Abandoned quarry; productive with hard work.

BURNT CABIN CREEK, SPRAY, WHEELER CO., OREGON

MESOLITE (C) CALCITE (C) LEVYNE (C) STILBITE (VS)
THOMSONITE (C) COWLESITE (C) PHILLIPSITE (S) GYROLITE (VS)
CHABAZITE (C) CLAY (C) APOPHYLLITE (S) HEULANDITE (VS)
ANALCIME (C) OFFRETITE-ERIONITE (C)

Offretite-erionite is the white overgrowth on some levyne crystals.

STATUS: Open to collecting along cliff & bank of road; productive.

EAST SPRAY, WHELLER CO., OREGON

MESOLITE (C) THOMSONITE (C) ANALCIME (C) CALCITE (C)
STILBITE (C)

STATUS: Depleted; covered over after completion of road work.

WEST SPRAY, WHEELER CO., OREGON

STILBITE (C) MESOLITE (C)

STATUS: Open to collecting along road; productive.

MITCHELL, WHEELER CO., OREGON

CHABAZITE (C) APOPHYLLITE (S) PHILLIPSITE (S)

STATUS: Collecting in roadcut east of town; some specimens found.

RICHARDSON'S RANCH, MADRAS, JEFFERSON CO., OREGON

CHALCEDONY (C) MORDENITE (C) CLINOPTILOLITE (C)

STATUS: Commercial collecting sites; collecting very good.

HAMPTON BUTTE, CROOK-DESCHUTES CO., OREGON

CHALCEDONY (C) STILBITE (S) APOPHYLLITE (VS)

STATUS: UNKNOWN; zeolites are found in green petrified wood.

DREWS RESERVOIR, LAKEVIEW CO., OREGON

LEVYNE (S) OFFRETITE-ERIONITE (S) COWLESITE (S)

STATUS: UNKNOWN

EASTERN OREGON ZEOLITE LOCATIONS:

PETE'S POINT, ANEROID LAKE, JOSEPH, WALLOWA CO., OREGON

THOMSONITE (C) CHABAZITE (C) NATROLITE? (S) APOPHYLLITE (S)
CALCITE (C) COWLESITE (C) ANALCIME (C) STILBITE (S)
LEVYNE (C) GARRONITE (C) PHILLIPSITE (S)

STATUS: Open to collecting; difficult hike to area.

ANEROID MOUNTAIN, ANEROID LAKE, JOSEPH, WALLOWA CO., OREGON

PHILLIPSITE (C) CHABAZITE (C)

STATUS: Open to collecting; difficult hike to area.

DOLLAR LAKE, JOSEPH, WALLOWA CO., OREGON

ERIONITE (C) HEULANDITE? (C) CALCITE (C)

STATUS: Open to collecting; difficult hike to area.

DURKEE OPAL MINE, SWAYZE CREEK, BAKER CO., OREGON

ERIONITE (C) OPAL (C) CLINOPTILOLITE (C)

STATUS: Abandoned open pit & dumps; some specimens can be found.

DURKEE, BAKER CO., OREGON

ERIONITE (C)

STATUS: UNKNOWN

OWYHEE DAM, MALHEUR CO., OREGON

HEULANDITE (C) CALCITE (C) ANALCIME (S) PENTAGONITE (VS)
CHABAZITE (C) CAVANSITE (S) APOPHYLLITE (S) OFFRETITE (VS)
STILBITE (C)
Gmelinite is not present.

STATUS: Collecting is not allowed in state park; very hard work.

SUCCOR CREEK, MALHEUR CO., OREGON

HEULANDITE (C) CHALCEDONY (C) MORDENITE (S) CLINOPTILOLITE (C)
Crystals are zoned. Clinoptilolite in core covered by heulandite.

STATUS: Open to collecting; specimens abundant in thunder eggs.

ROME, MALHEUR CO., OREGON

ERIONITE (C)

STATUS: in sedimentary deposits; not good for specimens.

CROOKED CREEK, MALHEUR CO., OREGON

ERIONITE (C)

STATUS: in sedimentary deposits; not good for specimens.

IDAHO ZEOLITE LOCATIONS

POST FALLS, KOOTENAI CO., IDAHO

STILBITE (S) PREHNITE (S) LAUMONTITE (S)

STATUS: UNKNOWN; coating fractures in diabasic rock.

WARM SPRINGS CREEK, PAYETTE RIVER, BOISE, BOISE CO., IDAHO

CHABAZITE (C) THOMSONITE (S)

STATUS: UNKNOWN, in very vesicular basalt with other zeolites.

JUNCTION OF PAPOOSE CREEK & SQUAW CREEK?, RIGGINS, IDAHO CO., IDAHO

PAULINGITE (C) CLAY (C) PHILLIPSITE (S)

STATUS: Location is lost.

RIGGINS, IDAHO CO., IDAHO

HEULANDITE (C) CHABAZITE (C) ANALCIME (C)

STATUS: Collecting in logging roadcuts; specimens abundant.

RACE CREEK, RIGGINS, IDAHO CO., IDAHO

MESOLITE (C) STILBITE (S)

STATUS: Collected from one large pocket; depleted.

BLUE JACKET CLAIM, SEVEN DEVILS DISTRICT, ADAMS CO., IDAHO

CHABAZITE (C) STILBITE (S) HEULANDITE (S) GARNET (S)

STATUS: On joint surfaces of garnet in contact-metamorphic deposit.

CHALLIS, CUSTER CO., IDAHO

MORDENITE (C) ANALCIME (C) STILBITE (C) HEULANDITE (C)

CHALCEDONY (C) CLAY (C) CALCITE (C)

STATUS: South of town, location uncertain.

GALENA SUMMIT, NORTH SALMON RIVER, CUSTER CO., IDAHO

STILBITE (C)

STATUS: UNKNOWN; on andesite within 1,000 feet of summit.

GOLDEN BELL MINE, BELLEVUE, WOOD RIVER DISTRICT, BLAINE CO., IDAHO

ANALCIME (S)

STATUS: UNKNOWN, coating fractures on granite.

BELLEVUE KING PROSPECT, BELLEVUE, BLAINE CO., IDAHO

LAUMONTITE (C) CALCITE (C) CLAY (C)

STATUS: UNKNOWN, veinlets in chloritized rock.

MINNIE MOORE MINE, BELLEVUE, BLAINE CO., IDAHO

STILBITE (C)

STATUS: UNKNOWN; several locations within the mine.

LITTLE SMOKY CREEK, HAILEY, BLAINE CO., IDAHO

THOMSONITE? (S)

STATUS: UNKNOWN; fibrous zeolite in cavities of dense basalt.

GLENNS FERRY, ELMORE CO., IDAHO

CHABAZITE (C) THOMSONITE (S) CALCITE (C) PHILLIPSITE (S)

STATUS: UNKNOWN, abundant in vesicular basalt 5 miles below town.

BRITISH COLUMBIA COASTAL ZEOLITE LOCATIONS:

CAMPBELL RIVER, VANCOUVER ISLAND, BRITISH COLUMBIA

ANALCIME (S) CALCITE (S) NEEDLES? (S)

STATUS: Collecting along mouth of river near beach; specimens scarce.

CHEAKAMUS RIVER, BRACKENDALE, BRITISH COLUMBIA

HEULANDITE (C) STILBITE (S) EPIDOTE (S)

STATUS: Collecting along river dike and in quarry; specimens present.

HEMLOCK VALLEY, MISSION, BRITISH COLUMBIA

PUMPELLYITE (C) LAUMONTITE (C) QUARTZ (C) PREHNITE (S)
CALCITE (C) EPIDOTE (C)

STATUS: Collecting in roadcuts; specimens are scarce.

SILICA BELL CLAIMS, FOUR BROTHERS MTN, south of HOPE, B.C.

QUARTZ (C) EPIDOTE (C) PREHNITE (C) CHABAZITE (S)
PYRITE (S) TITANITE (S) APATITE (VS) SCHEELITE (VS)
LAUMONTITE (S) ANYHDRITE (CASTS?) (S)

GOLD PAN CAMP, SPENCES BRIDGE, FRASER RIVER CANYON, BRITISH COLUMBIA

HEULANDITE (C) LAUMONTITE (C) CHABAZITE (VS) EPISTILBITE (VS)
CLAY (C) STILBITE (S)

STATUS: Collecting in talus along railway; specimens scarce.

SKAGIT BLUFFS, SNASS MTN., HOPE/PRINCETON HIGHWAY, BRITISH COLUMBIA

STILBITE (S) LAUMONTITE (S) PREHNITE (S) AXINITE (S)

STATUS: Collecting in roadcut, specimens scarce.

SOOKE RIVER, BRITISH COLUMBIA

EPIDOTE (C) QUARTZ (C) LAUMONTITE (S) CHABAZITE (S)
PUMPELLYITE (C) PREHNITE (C) ANALCIME (S) STILBITE (S)
CALCITE (C)

STATUS: UNKNOWN; collecting in basalt on east side of river.

MIDWAY & ROCK CREEKS, SIMILKAMEEN DISTRICT, BRITISH COLUMBIA

ANALCIME (C)

STATUS: UNKNOWN, abundant in volcanic rock north of junction.

CENTRAL BRITISH COLUMBIA ZEOLITE LOCATIONS:

TCHESINKUT LAKE, BURNS LAKE, BRITISH COLUMBIA

CHALCEDONY (C) STILBITE (VS)

STATUS: Collecting in basalt on north side of lake, specimens scarce.

BURNS LAKE, BRITISH COLUMBIA

NATROLITE (C) CALCITE (C) ANALCIME (S) LEVYNE (VS)
CLAY (C) THOMSONITE (S) STILBITE (VS) CHABAZITE (VS)
HEULANDITE (C)

STATUS: Open to collecting along road; good specimens present.

FRANCOIS LAKE, BRITISH COLUMBIA

FERRIERITE (S) COLLINSITE (C) HEULANDITE (C) CHALCEDONY (C)

STATUS: Open to collecting; specimens can still be found.

BULL CANYON, ALEXIS CREEK, BRITISH COLUMBIA

PHILLIPSITE (C) THOMSONITE (C) MESOLITE? (C) CHABAZITE (S)

STATUS: Collect at top of talus; specimens are present.

HORSE LAKE, 100 MILE HOUSE, BRITISH COLUMBIA

CHABAZITE (C) GMELINITE (C) ANALCIME (C) CALCITE (C)
LEVYNE (C) GYROLITE (C) APOPHYLLITE (C) THOMSONITE (S)
TACHARANITE (C) ARAGONITE (S)

STATUS: Collecting along road in glacial boulders & surface flows.

GREEN LAKE, 70 MILE HOUSE, BRITISH COLUMBIA

CHABAZITE (C) GMELINITE (C) PHILLIPSITE (C) NEEDLES? (S)
ANALCIME (C) CALCITE (C) THOMSONITE (S)

STATUS: Open to collecting glacial float in gravel pit & along road.

PAINTED CHASM, NORTH OF CLINTON, BRITISH COLUMBIA

CHABAZITE (C) ARAGONITE (C) HEULANDITE (S) THOMSONITE (S)
PHILLIPSITE (C) ANALCIME (S)

STATUS: Collecting along road & railway cut near camping area.

BDNAPARTE RIVER, CHASM, BRITISH COLUMBIA

CHABAZITE (C)

STATUS: UNKNOWN, in basalt cavities near the river.

HIGHLAND VALLEY MINES, SOUTH FORGE MTN., ASCHROFT, BRITISH COLUMBIA

CHABAZITE (C) STILBITE (S) LAUMONTITE (S) HEULANDITE (S)
PREHNITE (S) BORNITE (S) EPIDOTE (S) CHLORITE (S)

STATUS: UNKNOWN, on joints of White zone in the mine.

CRAIGMONT MINE, MERRITT, BRITISH COLUMBIA

HARMOTOME (S) HEULANDITE (S)

STATUS: Closed to collecting; found on 3500 foot level in mine.

OMINECA MOUNTAINS, BRITISH COLUMBIA

HARMOTOME? (S)

STATUS: In copper-moly prospect in granite; twinned xls.

FISHERMAIDEN MINE, FOUR MILE (SILVERTON) CREEK, SLOCAN DIVISION, B.C.

HEULANDITE (S)

STATUS: UNKNOWN

CACHE CREEK, BRITISH COLUMBIA

NATROLITE (S)

STATUS: UNKNOWN; reported NE of town.

CRISS CREEK, DEADMANS RIVER, SAVONA, BRITISH COLUMBIA

ANALCIME (S) MESOLITE (S) NATROLITE (S) HEULANDITE (S)

STATUS: UNKNOWN, specimens collected 1/4 mile above junction.

PASS VALLEY, DEADMANS RIVER, SAVONA, BRITISH COLUMBIA

ERIONITE (C) CLAY (C) CLINOPTILOLITE (C)
Offretite, reported from this location is not present.

STATUS: Collecting on hillside; good specimens with some work.

KAMLOOPS LAKE, KAMLOOPS, BRITISH COLUMBIA

FERRIERITE (C) CHALCEDONY (C) QUARTZ (S) GOETHITE (S)
CALCITE (C) CLINOPTILOLITE (S)

STATUS: Collecting along railway & shore of lake; excellent collecting.

TWIG CREEK, MONTE HILLS, WEST OF MONTE LAKE, BRITISH COLUMBIA

ERIONITE (C) STILBITE (C) CHABAZITE (C) CLAY (C)
OFFRETITE (C) HEULANDITE (C) PAULINGITE (S)

STATUS: Collecting along logging road, good collecting.

MONTE HILLS, MONTE LAKE, BRITISH COLUMBIA

MESOLITE (C) CHABAZITE (C) STILBITE (C)

STATUS: in logging roadcuts northwest of lake; collecting good.

MONTE LAKE, BRITISH COLUMBIA

FERRIERITE (C) CALCITE (C) CHALCEDONY (C) GOETHITE (S)

STATUS: Collecting in road cut & railway cut; specimens good.

SOUTH MONTE LAKE LOGGING ROAD, BRITISH COLUMBIA

ANALCIME (C) CLAY (C) HEULANDITE (C) LEVYNE (S)
THOMSONITE (C) STILBITE (C) CALCITE (C) COWLESITE (S)
CHABAZITE (C)

STATUS: Collecting in logging roadcuts south of lake; specimens present.

DOUGLAS LAKE ROAD, WESTWOLD, BRITISH COLUMBIA

CHABAZITE (C) THOMSONITE (C) STILBITE (C) HEULANDITE (S)
LEVYNE (C) OFFRETITE (C) CALCITE (S) MESOLITE (S)
COWLESITE (C) PHILLIPSITE (S)

Offretite is present as thick overgrowths on levyne.

STATUS: Open to collecting along road & talus; specimens abundant.

PINAUS LAKE, WESTWOLD, BRITISH COLUMBIA

FERRIERITE (C) CALCITE (C) CLINOPTILOLITE (VS)

STATUS: Collecting along road & along north shore of lake; good specimens.

CHASE CREEK, FALKLAND, BRITISH COLUMBIA

ERIONITE (C) PAULINGITE (S) CLAY (C) HARMOTOME (VS)
HEULANDITE (C)

STATUS: Collecting on gravel bars along creek, good material.

YELLOW LAKE, DLALLA, BRITISH COLUMBIA

BREWSTERITE (C)	HEULANDITE (C)	MESOLITE (C)	YUGAWARALITE (VS)
FLUORITE (C)	THOMSONITE (C)	SCOLECITE (S)	NEW MINERAL (VS)
ANALCIME (C)	GOETHITE (C)	PYRITE (S)	CHABAZITE (S)
CALCITE (C)	LAUMONTITE (C)	STILBITE (S)	NATROLITE (S)
PHILLIPSITE (S)	HARMOTOME (VS)	APOPHYLLITE (VS)	

STATUS: Collecting along main road & in hills, specimens with hard work

BLAKEBURN, COALMONT, BRITISH COLUMBIA

THOMSONITE (C)	CHABAZITE (C)	GMELINITE (S)	OFFRETITE (S)
CALCITE (C)	PHILLIPSITE (C)	LEVYNE (S)	

STATUS: Abandoned mines; collecting can produce some specimens.

EASTERN BRITISH COLUMBIA/ALBERTA LOCATIONS:

ICE RIVER, YOHO NATIONAL PARK, GOLDEN, BRITISH COLUMBIA

EDINGTONITE (C)	PYRITE (VS)	PHLOGOPITE (VS)	ACMITE (VS)
CALCITE (C)	ANCYLITE (VS)	GALENA (VS)	MAGNETITE (VS)
NATROLITE (C)	ZIRCON (VS)	ANALCIME (S)	APATITE (S)
SIDERITE (S)	BARITE (S)	CATAPLEITE (S)	PHLOGOPITE (S)
ILMENITE (S)	THOMSONITE (VS)		

STATUS: Closed to collecting in National Park; specimens very hard to find.

WAR EAGLE MINE, ROSSLAND, BRITISH COLUMBIA

GMELINITE (S)	NATROLITE (S)	LAUMONTITE (S)	CHABAZITE (S)
PREHNITE (S)	CHABAZITE (S)	APOPHYLLITE (S)	HEULANDITE (S)

STATUS: UNKNOWN, some specimens on the 7th level.

CROWSNEST PASS, COLEMAN, ALBERTA

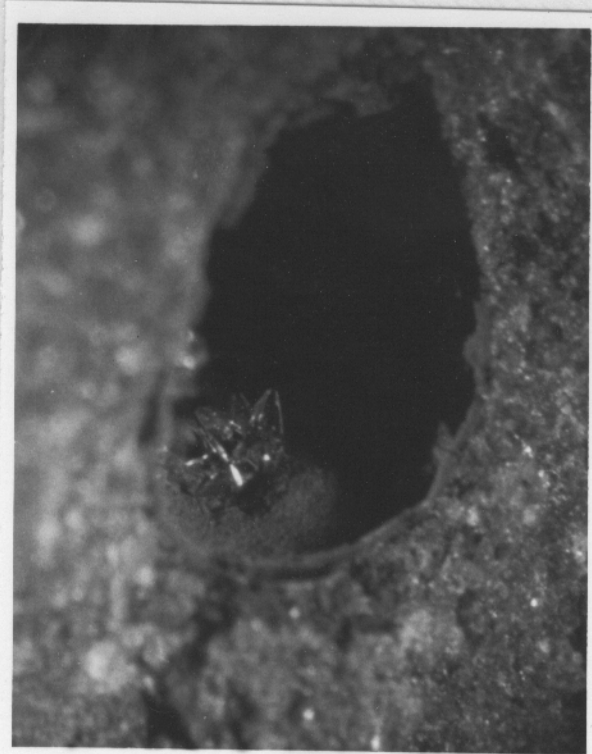
ANALCIME (C)

This is primary Analcime found in solid rock, not open spaces.

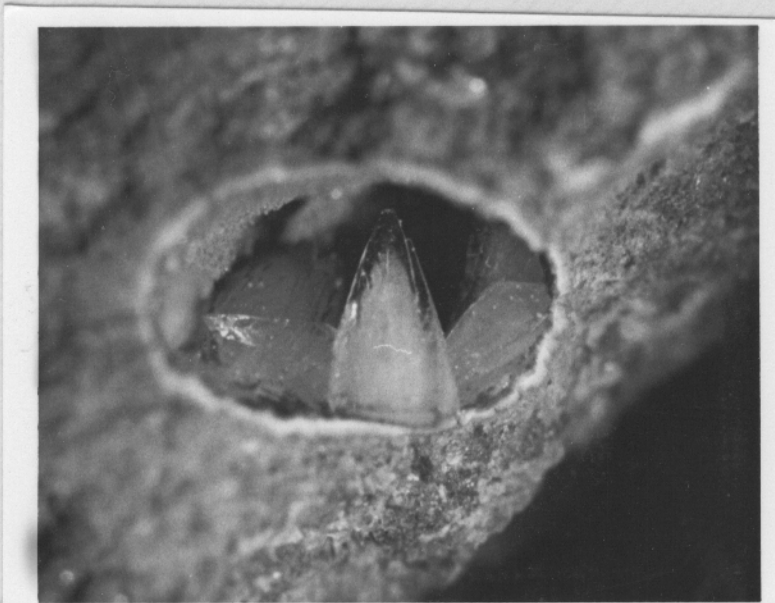
STATUS: Open to collecting in volcanics; good specimens with work.



#25 - OFFRETITE - NEW RITTER QUARRY, GRANT COUNTY, OREGON - 15X



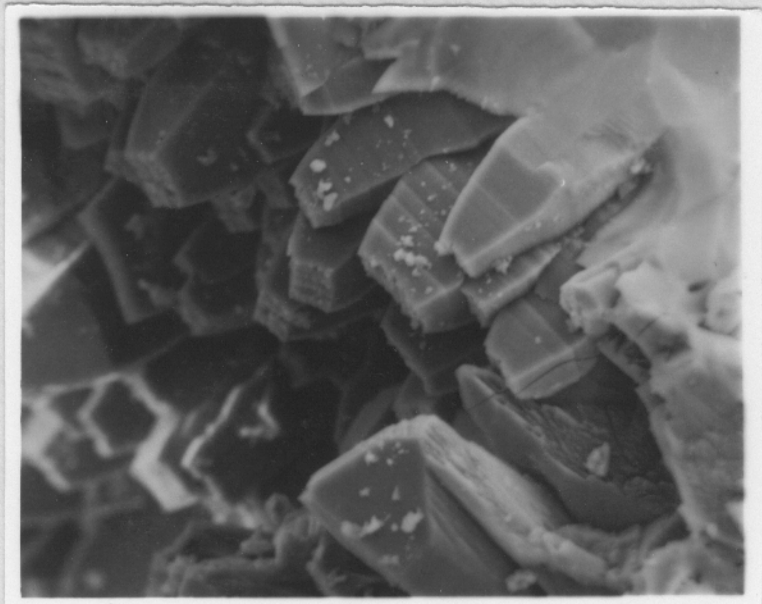
#26 - UNKNOWN #2 - GOBLE, COLUMBIA COUNTY, OREGON - 18X



#27 - UNKNOWN #2 - GOBLE, COLUMBIA COUNTY, OREGON - 12X



#28 - UNKNOWN #3, #2 - GOBLE, COLUMBIA COUNTY, OREGON - 10X



#29 - UNKNOWN #3, #2 - GOBLE, COLUMBIA COUNTY, OREGON - 390X